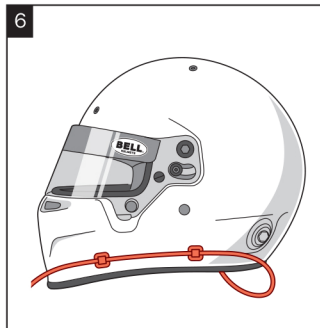
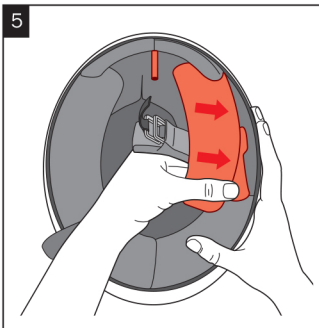
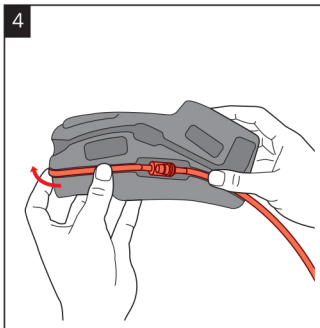
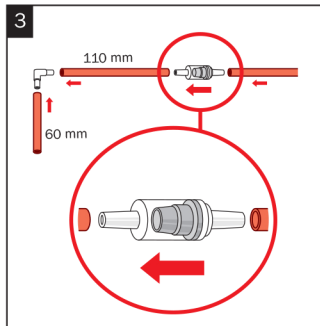
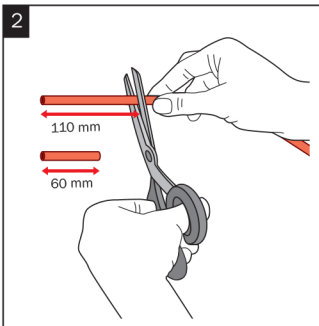
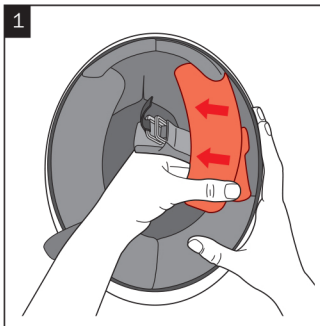


⚠ IMPORTANT.

Read this notice before placing the Drinking Tube Kit on your helmet!



1. Remove 1 cheekpad (left or right).
2. Cut off 2 pieces from the drinking tube, 1 at 60 mm and 1 at 110 mm.
3. Connect all pieces together in followin order: 60 mm drinking tube, elbow connection, 110 mm drinking tube, valve (make sure the arrow is pointed to the 110 mm tube, rest of the dinking tube).
4. Place the drinking tube in the cheekpad. There is a preserved canal on the lower part.
5. Place the cheekpad back to its original position.
6. If needed you can use the clips to attach the drinking tube on the outside of the helmet.